

# User Manual

## *Assistent table Anna*

- *Model Anna Tripod*
- *Model Anna Cross*
- *Model Anna Special*



# Table of content

<b>1. Introduction - assistent table Anna .....</b>	<b>3</b>
<b>2. Unpacking.....</b>	<b>3</b>
<b>3. Important – Before use .....</b>	<b>3</b>
<b>4. Product classification and key data .....</b>	<b>4</b>
<b>5. Function and use .....</b>	<b>5</b>
5.1 Areas of use.....	5
5.2 Wheels and brake .....	5
5.3 Adjusting the tables height .....	5
5.4 Charging & handling the battery.....	6
5.5 Replacing the battery modules.....	6
5.6 Maintenance of the battery.....	6
<b>6. Cleaning and maintenance.....</b>	<b>7</b>
<b>7. Safety .....</b>	<b>7</b>
7.1 CE Declaration of conformance .....	7
<b>8. Technical specification.....</b>	<b>8</b>
8.1 Disposal and recycling .....	8
<b>9. Warranty .....</b>	<b>8</b>

# 1. Introduction - assistant table Anna

Thank you for choosing a Rini assistant table.

Rini's assistant tables Anna are designed to offer medical professionals the best possible function and ergonomics to meet demands in daily work.

The tables are easy to move around in the operating room and they stand firm when braked. The height is electrically controlled, and the range allows an optimal ergonomic working position. Tabletops are made of stainless steel, are sound absorbing and have smooth surfaces for best hygiene. Different sizes of tabletops are available, and the Anna Cross table can also be fitted with fall restraints on one or more sides of the table.

Rini is constantly improving existing products and developing new ones. Consequently, we value the professional user's point of view so do not hesitate to let us know your opinion about any of our product lines.

## 2. Unpacking



**To ensure patient safety and the life span of the product it is important to observe the following instructions before use.**

Before you unpack check the packaging. Report any damage immediately to the transport company and your local Rini representative. Remove the product and take out any non-installed accessories that are packed separately



**Do not use sharp tools when removing the packaging material. This can cause damage.**

Make sure that the delivery includes all ordered parts. Contact your Rini sales representative if you find any discrepancies



**Be careful when lifting the product off the pallet. The product is heavy and may cause injury.**

**Before using the product, please check the following:**

- All cables are connected as described in this manual

**Please contact your local Rini sales representative if you have any concerns.**

## 3. Important – Before use

When you receive the assistant tables Anna, everything is assembled and ready to use.

All electrical connections are complete and since the assistant table is intended for battery operation, all that remains is to check that all cables are properly connected, and that the battery is charged.



**Please read this user manual carefully and familiarize yourself with how the product should be used before putting it into use.**

## 4. Product classification and key data

The product is designed for use in hospitals, specialist clinics or similar care environments by professional staff. The product's risk class in accordance with MDR 2017/745 Annex VIII is "Class 1". Previous generations and similar products are also within risk class "Class 1".



The product is traceable via serial number and Rini has a "Post-market surveillance" system integrated within its quality system that is certified according to ISO13485 for medical devices. Any incidents are reported to the relevant authorities in accordance with applicable laws.

The product has been tested against applicable standards in terms of "General safety and performance requirements", "Demonstration of conformity" and is covered by a "Risk Management" process in accordance with ISO14971.

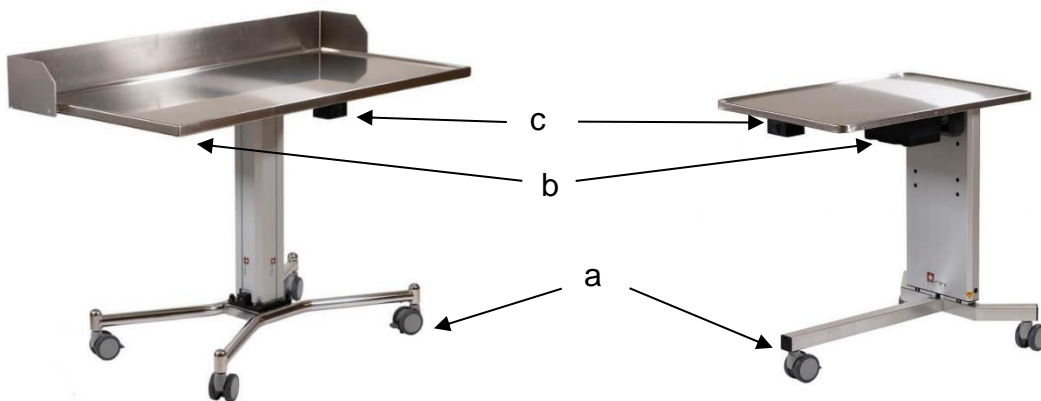
Technical specification can be found in a separate chapter in this manual. Information about the manufacturer and where and when the product was manufactured appears on the type plate below. For questions about this product, specify the UDI and SN for identification.



### Label Description

	Warning. Risk is present. Read the applicable information in the user manual.
	Type B product with protection against electric shock.
SWL	Safe Work Load. The product must not be loaded with more than the specified weight.
IPX4	The product is protected from splash of water.
Duty cycle	Average ratio between operating time and idle time of the electrical lifting mechanism.

## 5. Function and use



- a) Lockable wheels
- b) Control box with rechargeable battery
- c) Control panel (different positions possible) with charge intake

### 5.1 Areas of use

The assistant tables are designed for different types of work in operating rooms where the operator needs a stable and ergonomic table for surgical instruments and accessories.

Intended areas of use include Neurosurgery, Eye Surgery, Ear, Nose and Throat surgery, Facial Plastic Surgery, Robotic Surgery, Dental Surgery and similar surgical areas.

### 5.2 Wheels and brake

The tables have easy-rolling wheels that are individually lockable.



The wheels are locked by pressing the foot down on the wheel lock lever. The brake is released by pulling the wheel lock lever up.



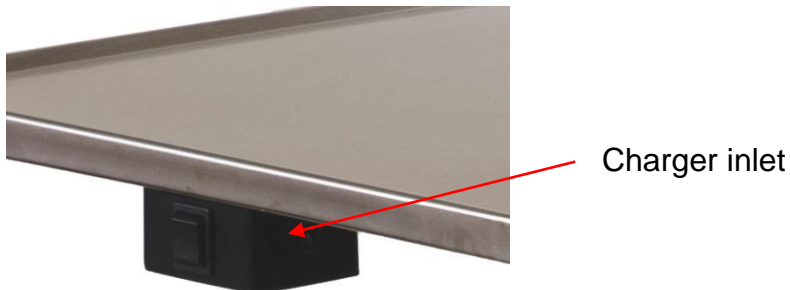
**Assistant table Anna Cross with 4 wheels, max load 40kg. Anna Tripod with 3 wheels, max load 20kg.**

### 5.3 Adjusting the tables height

The tables have electric height control which is battery operated. The height of the table is controlled with a control panel mounted under the tabletop.

## 5.4 Charging & handling the battery

The charger inlet is located on the control panel. A fully charged battery will operate the table approximately five days during normal working conditions.



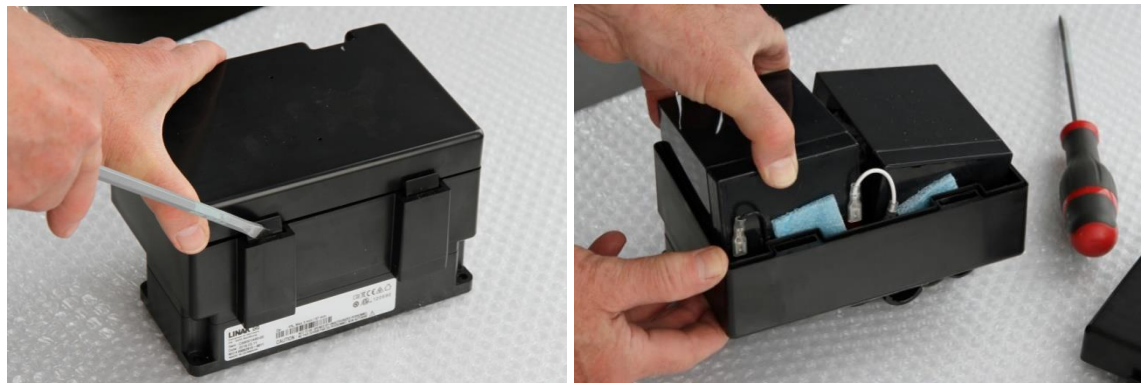
It takes approximately 12 hours to fully charge the battery and charging is automatically switched off to avoid overcharging.



**The table should not be used during charging. Only the dedicated charger must be used.**

## 5.5 Replacing the battery modules

The batteries are mounted inside the control box and to replace them first unplug the control box connectors and remove the four screws holding it.



Use a small screwdriver to open the cover of the control box. Remove the batteries and unplug the connectors. Insert new batteries and reconnect them accordingly.

Re-install the control box and cables.

## 5.6 Maintenance of the battery

Batteries have a limited lifecycle and must be replaced after approximately four years of use under normal operating conditions. For optimum performance, the battery should be charged weekly and must be charged at least every third month to avoid damage from self-discharge.

## 6. Cleaning and maintenance

No part of the product normally comes into contact with the patient during surgery. Exposed parts should be cleaned after each use and follow the hospital's cleaning regulations and procedures.

### Disinfection

Part	Product	Information
<b>Tabletop, chassis and wheels</b>	Disinfectants according to hospital's recommendation	Disinfectants containing alcohol can be used
<b>Control panel</b>	Noedischer Dekonta CCOTRADE RW	1-3% concentration 0,5% concentration

### Cleaning

Part	Product	Information
<b>Tabletop</b>	Water and soap	Use damp cloth
<b>Chassis and wheels</b>	Water and soap	Use damp cloth
<b>Battery charger</b>	Water	Use damp cloth

### Repairs

The product should only be repaired by Rini or a Rini authorised service centre. Product to be repaired under warranty must be sent to Rini factory or an authorised Rini service centre.



**Unauthorized repairs and modifications may result in loss of function and void warranty.**

## 7. Safety

The product should only be used as intended otherwise it can cause injury to persons or product. Necessary knowledge of the product is required before clinical use and this manual should always be available when using the product. No accessories other than those mentioned in this manual may be used. Please note the warning signs on the product.



**Warning signs are used when there is a risk for patients, staff or product.**

### 7.1 CE Declaration of conformance



**Assistant table 130-0010x-xx follows EU Medical Device Regulation 2017/745 for medical products.**

**Tested according to IEC 60601-1**

## 8. Technical specification

General	
Weight	Anna Tripod 23kg / Anna Cross 43kg
Tabletop L X W	Anna Tripod 700 x 500mm / Anna Cross 1000 x 600mm Other dimensions and designs are available on request
Medical classification	Class 1 Type B
Standard	EN/IEC 60601
Protective class	IPX4
Battery	24V 2,9Ah rechargeable lead acid
Charger	100 - 240V
Operator data	
Lifting capacity	Anna Tripod 20kg / Anna Cross 40kg
Height adjustment	Anna Tripod 700 - 1100mm Anna Cross 850 - 1350mm Other heights are available on request
Operational environment	
Temperature	+5°C to +40°C
Relative humidity	20% to 90% at 30°C
Atmospheric pressure	700 to 1060hPa
Transport and storage	
Temperature	-10°C to +50°C
Relative humidity	20% to 90% at 30°C
Atmospheric pressure	700 to 1060hPa

### 8.1 Disposal and recycling

The product is mainly made from environmentally recyclable materials as steel, stainless steel, aluminum, and plastics. Rini recommends that the material be sorted and recycled in connection with the destruction of the product.



**Electronic parts and cables shall be handled as electronic waste in accordance with local requirements. The battery contains lead and is disposed according to current environmental legislation.**

## 9. Warranty

The warranty is valid one year from the date of purchase. Please contact Rini for further information.



Rini Ergoteknik AB Fågelsångsvägen 3B  
SE-186 42 Vallentuna Sweden  
Phone +46 8 594 77170  
Email [info@rini.se](mailto:info@rini.se) [www.rinicompany.com](http://www.rinicompany.com)

